




mmsb



“ We have the distinction of being recognized as leaders in project management and designs, and have successfully delivered mega projects at economical costs on time. ”

Dato' Ir. Ashok Kumar Sharma
Founder

BOARD OF MANAGEMENT



Standing Left to Right: Saraswathi Rajendran, Amar Raj Sharma, Ir. Augustine Maria Arokiasamy, Ir. Mak Wing Hon, Asokan Krishna Iyer, Ir. Azmi Abdul Rahman, Balenderan Atchalingam, Sajal Nandy, Karishma Sharma.

Seated Left to Right: Dato' Ir. Goh Chye Koon, Datuk Ir. Adanan Mohamed Hussain, Tan Sri Izzuddin bin Dali, Dato' Ir. Ashok Kumar Sharma

VISION

To be the preferred engineering services group in the region that provides unparalleled quality in delivering projects.

MISSION

Ensuring our projects are managed in a safe, sustainable and collaborative manner.

VALUES

To inculcate the following values through employee engagement.

- Integrity & Accountability
- Embracing & Enhancing diversity
- Nurturing a culture of honesty and hard work that builds trusted relationships



3Es

We are a multi-disciplinary engineering and project management consultancy with a unique brand value proposition.

Experience

Take advantage of our experience and innovative thinking skills

Since inception in the 80s, we have pursued best engineering practices in all aspects of a project. Our competitive advantage is our team, who are experienced in identifying economical and practical solutions ultimately bringing blueprints to reality.

Exposure

Be inspired by our wide exposure of project successes

Over the years we have successfully delivered a wide portfolio of projects in Peninsular Malaysia, East Malaysia, and in the following countries: India, Pakistan, Sri Lanka, Bangladesh, Vietnam, Laos, Indonesia, Ghana, and the Middle East, amongst others.

Expertise

Capitalize on the expertise of our people

We have assisted clients in delivering projects by emplacing the proper expertise in their projects, and this has proven to benefit the projects both in terms of timely delivery and cost effectiveness.

OUR SERVICES

Civil & Structural Engineering



We have been at the forefront of this service since inception and are proud of having delivered many infrastructure projects such as complex road and rail viaducts, highways, expressways and buildings which includes hospitals, airports and industrial facilities for commercial, residential and institutional sectors.

Project & Construction Management



We provide expertise in an integrated scope of services that include feasibility studies, construction management, engineering management, strategic and financial planning, and advisory services.

Mechanical & Electrical Engineering



We have wide experience in both infrastructure and building projects that include ports, rail, township development, commercial, residential, industrial, hospitals, hotels, and airports.

Independent Check Engineers



In this specialized service, we have project exposure in various sectors such as rail, highways, bridges, buildings, and power projects. The scope of services that we provide include cost, pre and construction stage reviews, as well as monitoring and overseeing of the projects.

SERVICES





RAIL



HIGHWAYS & BRIDGES



BUILDINGS



PORTS



POWER



MANAGEMENT SERVICES



RAIL

An aerial photograph of a cityscape featuring a prominent monorail track that curves diagonally across the frame. The track is supported by white concrete pillars and runs parallel to a multi-lane road. To the left of the road is a large, lush green park area with a playground. To the right is a dense residential neighborhood with many houses having brown tiled roofs. In the background, there are more buildings and hills under a clear sky. The word "RAIL" is written in large, white, italicized capital letters across the middle of the image, partially overlapping the park and the road.



Light Rail Transit 2 Ampang Line Extension

- Scope: Alternative Structural Design of 17.3 km of guideway
- Completion Date: 2016



Light Rail Transit 3 Shah Alam - Klang

- Scope: Lead Consultant for Civil, Structural, Geotechnical, Mechanical, Electrical & Architectural Designs of 18.4 km of elevated viaduct, 10 stations and a train depot
- Completion Date: 2023



Mass Rapid Transit Depot

- Scope: Civil & Structural designs of MRT1 depot
- Completion Date: 2015



East Coast Rail Link Phase 1

- Scope: Independent Checking Engineers for 627 km of rail
- Completion Date: 2024



Mass Rapid Transit, Line 1

- Scope: Construction Engineering for 10.6 km of viaduct
- Completion Date: 2015



Light Rail Transit 3 Depot

- Scope: Civil, Structural, Geotechnical, Mechanical, Electrical & Architectural Designs
- Completion Date: 2023

HIGHWAYS & BRIDGES





Penang Second Crossing

- Scope: Submitting & Review Engineers (Civil, Structural, Mechanical & Electrical) for the Marine Portion of 16.5 km and Seismic Analysis of Penang Island Approach
- Completion Date: 2014



Pasir Gudang Highway 2 Lane to 3 Lane Carriageway Expansion

- Scope: Civil, Structural, Electrical & Geotechnical Designs for 8 km
- Completion Date: 2016



Flyovers along Jalan Duta, Jalan Kuching & Jalan Segambut

- Scope: Structural Designs for 3 interchanges
- Completion Date: 2007



DUTA – ULU KELANG EXPRESSWAY (DUKE-PHASE 1) & TUN RAZAK LINK (TRL-PHASE 2) & SETIAWANGSA – PANTAI EXPRESSWAY (SPE-PHASE 3)

- Scope: Civil, Structural, Geotechnical, Mechanical & Electrical Designs for 21 km of viaduct
- Completion Dates: 2009, 2017 and 2020



Ampang – Kuala Lumpur Elevated Highway (AKLEH)

- Scope: Civil, Structural, Geotechnical, Mechanical & Electrical Designs for 6km of viaduct
- Completion Date: 2001



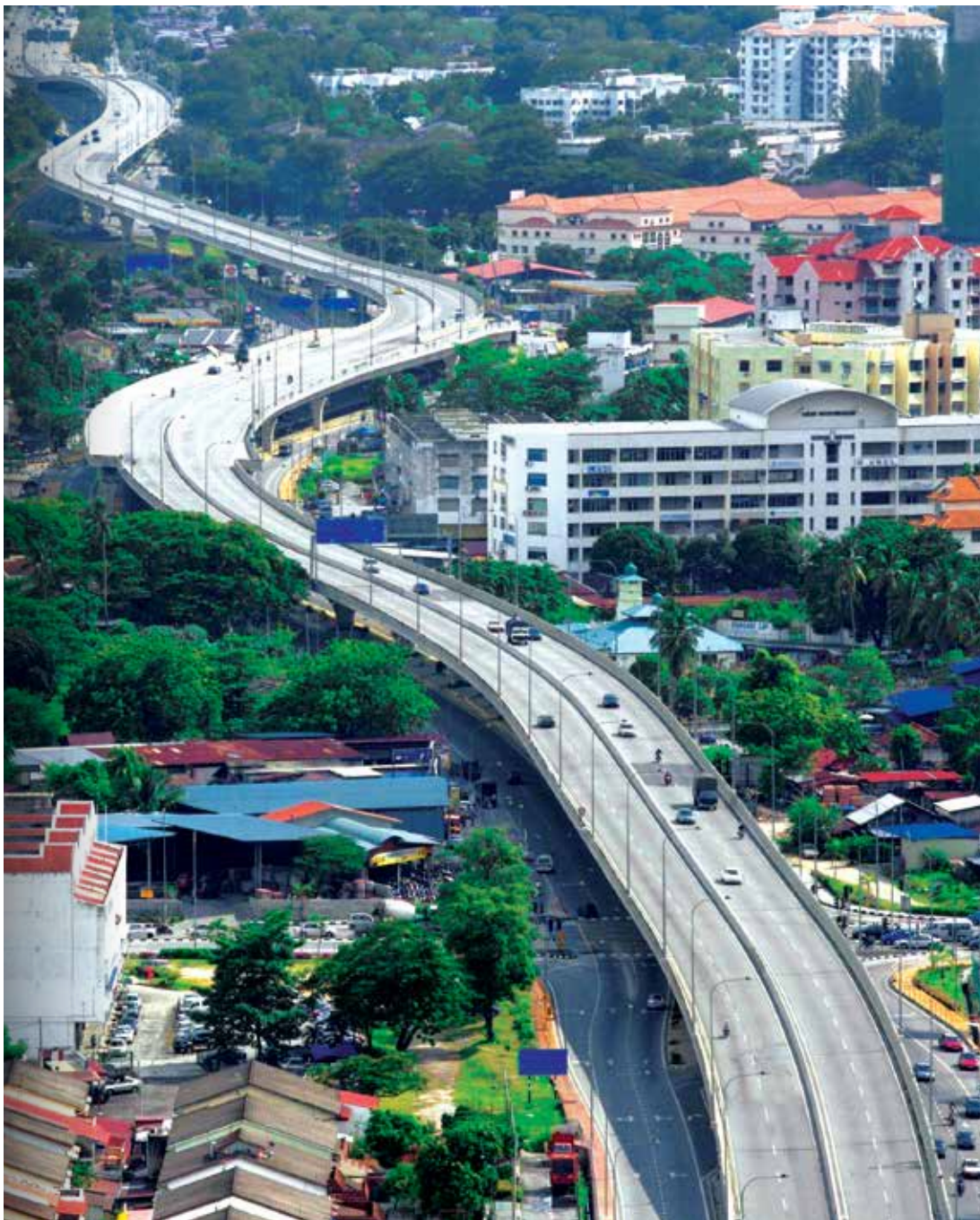
Subang Kelana Link

- Scope: Civil & Structural Designs of 4.5 km of viaduct
- Completion Date: 2009



Istana Ramps at Jalan Duta

- Scope: Structural Designs for four ramps
- Completion Date: 2011



Bayan Baru Viaduct

- Scope: Civil, Structural, Geotechnical, Mechanical & Electrical Designs of 2.4 km of viaduct
- Completion Date: 2005



New Pantai Expressway

- Scope: Civil, Structural, Geotechnical, Mechanical & Electrical Designs for 21 km of expressway
- Completion Date: 2004



Lebuhraya Kajang Seremban

- Scope: Independent Checking Engineers for Lenders for 30 km of expressway
- Completion Date: 2011

BUILDINGS





Mixed Development 8MD3, Putrajaya

- Scope: Mechanical & Electrical Designs
- Completion Date: 2024



Perbadanan Filem Negara Malaysia Headquarters, Selangor

- Scope: Civil, Structural & Geotechnical Designs
- Completion Date: 2021



KPJ 2 Damansara Specialist Hospital

- Scope: Civil, Structural, Mechanical & Electrical Designs for a 300 bed hospital
- Completion Date: 2019



Cybersecurity Head Office and Innovation Centre, Cyberjaya
 - Scope: Mechanical & Electrical Designs
 - Completion Date: 2019



Cutting and Assembly Workshop, Malaysia Marine & Heavy Engineering (MMHE)
 - Scope: Architectural, Civil, Structural, Mechanical & Electrical Designs
 - Completion Date: 2009



Cargo Building, Senai Airport
 - Scope: Civil & Structural Designs
 - Completion Date: 2004



Kuala Lumpur International Airport Administration Building
 - Scope: Civil & Structural Designs
 - Completion Date: 1998



District Police Head Office, Brickfields

- Scope: Civil, Structural, Mechanical & Electrical Designs
- Completion Date: 2018



Tourism Ministry Government Complex, Putrajaya

- Scope: Civil & Structural Designs
- Completion Date: 2011



Bandar Kinrara Mixed Development, Kuala Lumpur

- Scope: Civil & Structural Designs
- Completion Date: 2016



Office Complex, Putrajaya

- Scope: Civil, Structural, Mechanical & Electrical Designs
- Completion Date: 2008

PORTS





Port of Tanjung Pelepas
 - Scope: Master Plan Review
 - Completion Date: 2013



Kuantan Port
 - Scope: Structural Designs
 - Completion Date: 1998



Labuan Port
 - Scope: Privatization Study
 - Completion Date: 2015

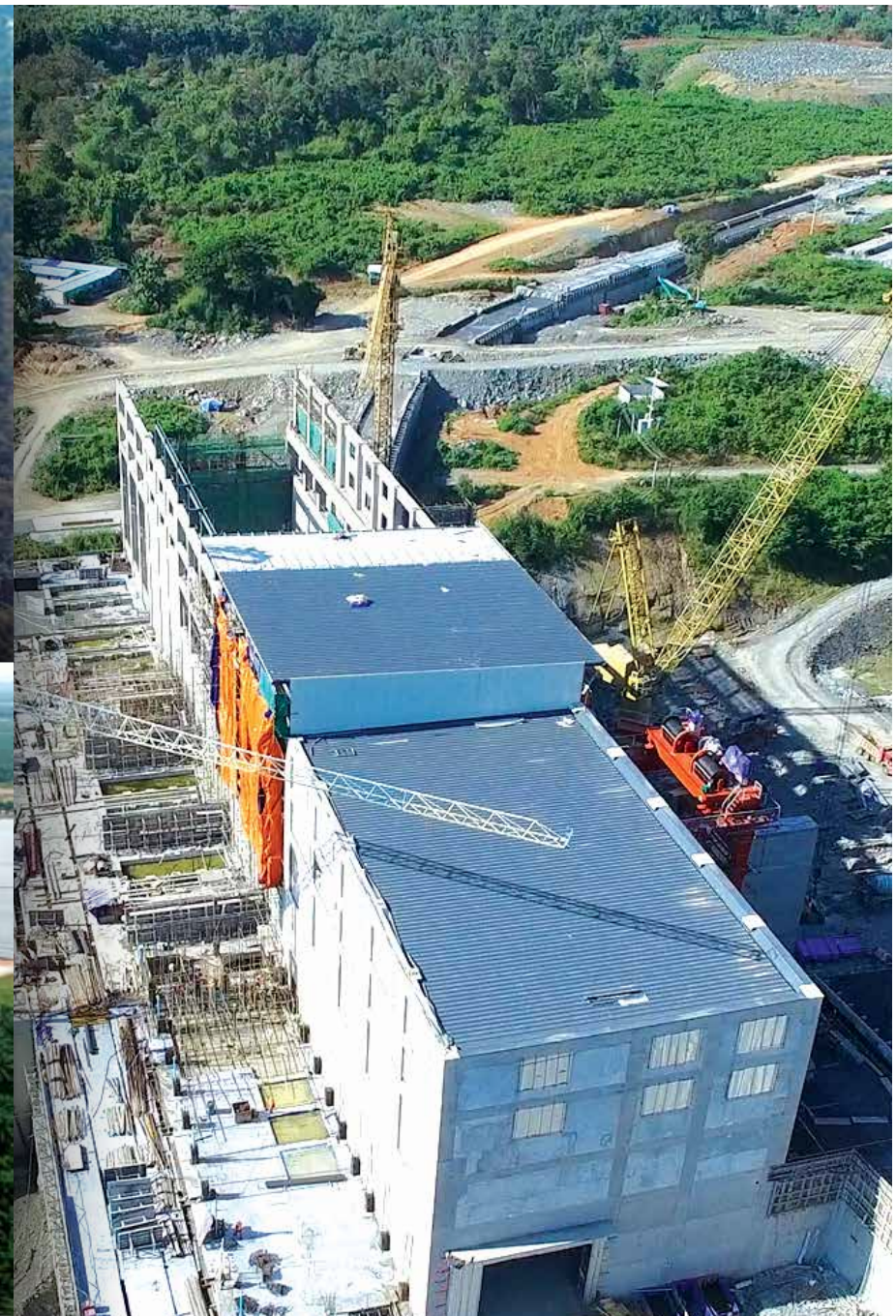
An aerial photograph of a large-scale dam construction project. The dam's concrete structure is visible, with several vertical buttresses. A prominent yellow tower crane stands in the foreground, its arm extending over the dam. Other cranes are visible in the background near a river. The word "POWER" is overlaid in large, white, italicized capital letters across the center of the image. The surrounding area includes a river, some vegetation, and a parking lot with several vehicles.

POWER



3 x 50 MW Solar Photovoltaic Energy Generating Facility in Kedah, Melaka and Terengganu

- Scope: Independent Checking Engineers
- Completion Date: 2019



Don Sahong Hydropower Project

- Scope: Technical Review of 260 MW plant and detail designs of roads and bridge
- Completion Date: 2019

PROJECT MANAGEMENT SERVICES





Karachi - Hyderabad Motorway, Pakistan



Pan - Borneo Highway, Sarawak



Pan Borneo Highway Sarawak
Package 1, Telok Melano - Sematan
- Completion Date: January 2019



Pan Borneo Highway Sarawak



Batang Rajang Durin Bridge



Solar Photovoltaic Energy Generating Facility in Kedah

- Scope: Project and Construction Management
- Completion Date: 2019

www.mmsbconsult.com.my

MMSB Projects Sdn. Bhd. (Co. Reg. 524678-D)

A-7-1, Plaza Kelana Jaya,
Jalan SS 7/13A, Kelana Jaya,
47301, Petaling Jaya,
Selangor Darul Ehsan, Malaysia

MMSB Consult Sdn. Bhd. (Co. Reg. 239789-H)

A-8-2 & A-8-3, Plaza Kelana Jaya,
Jalan SS 7/13A, Kelana Jaya,
47301, Petaling Jaya,
Selangor Darul Ehsan, Malaysia

T +6 03 7949 8600

F +6 03 7874 9600

E enquiry@mmsbconsult.com.my